



Ente di gestione delle aree protette delle Alpi Cozie

22nd MEETING OF THE ALPINE IBEX EUROPEAN SPECIALIST GROUP (GSE-AIESG)

Zernez (CH) 26 - 28 October



Comprensorio Alpino ToI

Winter census of Alpine ibex *Capra ibex* in Chisone, Germanasca and Pellice Valleys (Piedmont, Italy)

Maurino Luca¹ & Marco Giovo²

¹Ente di gestione delle aree protette delle Alpi Cozie - Val Troncea, via della Pineta 10060 Pragelato (TO), Italy – maurino.alpicozie@ruparpiemonte.it

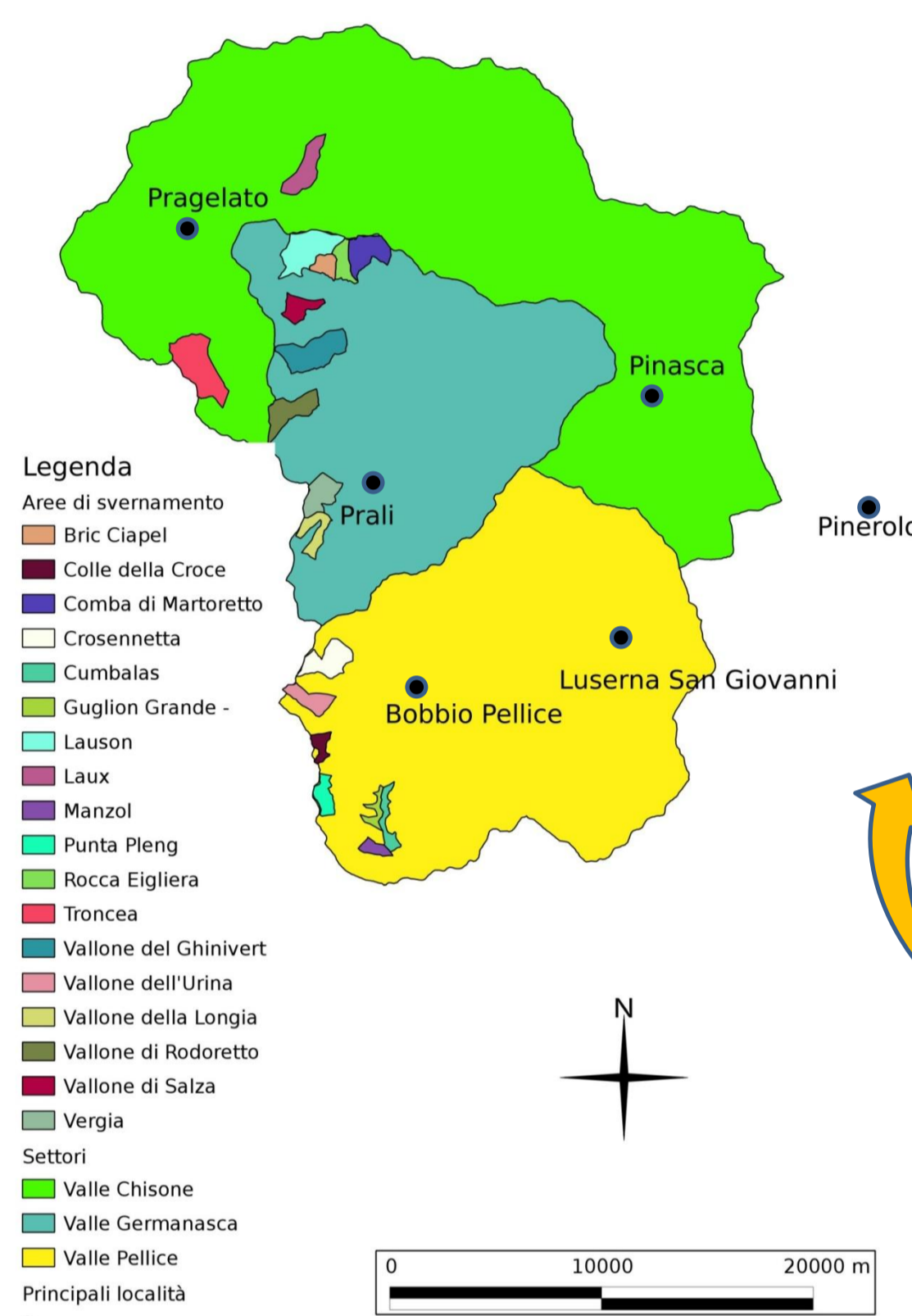
²Comprensorio Alpino TO1, via Alliaudi 1, 10060 Bricherasio, (TO), Italy - info@catouno.it

A series of reintroductions carried out between 1978 and 1995 in the Pellice and Chisone Valleys and the neighbouring French region of Queyras have allowed the return of the Alpine ibex in the Pinerolo Valleys.

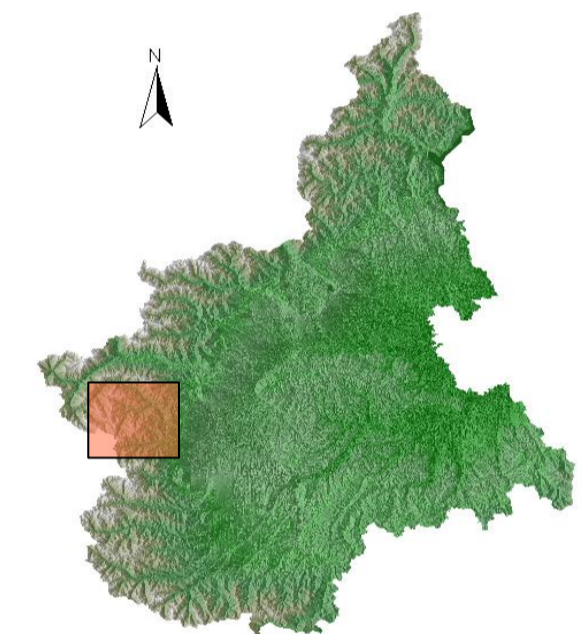
In order to monitor the distribution and abundance of this species in the area, from 2005 the hunting district “Comprensorio Alpino TO1” and, since 2006, the “Val Troncea” Regional Park, with the collaboration of the “Albergian” and “Valloncrò” Game Reserves, carried out standardized counts on wintering areas.

In December, the Alpine ibex concentration and the reduced mobility of the animals allows to a reduced number of operators to define the population size (MNA minimum number alive) and structure, and to estimate the related demographic parameters.

Results show a substantial population stability in Chisone Valley (range: 28-56, mean = 48.2, standard deviation = 11.5) and Pellice Valley (range = 36-63, mean = 52.6, standard deviation = 11.3), while Germanasca Valley MNA seems still to be increasing (range = 146-304, mean = 235.2, standard deviation = 47.0).



The monitored sites (n = 16, Chisone Valley = 2, Germanasca Valley = 9, Pellice Valley = 5) include the main wintering areas located in the mountains around Pinerolo city (NO 336587 - 4984244, SE 348030 – 4954167, UTM 32 N, WGS 84), for a total area surveyed of 3465.7 ha (range: 74.2 - 485 ha, mean = 214.6 ha).



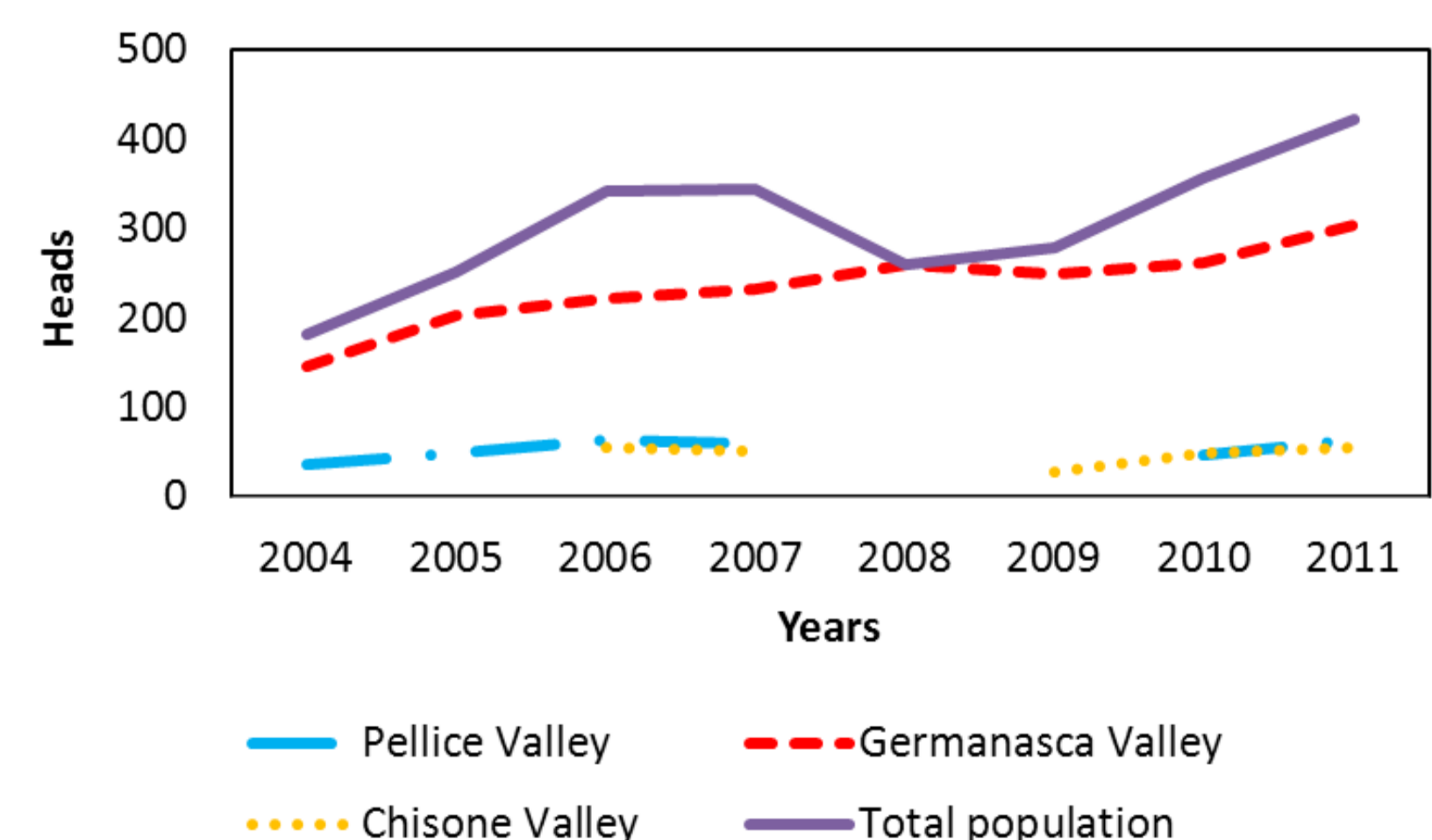
Chisone Valley					
	2006	2007	2009	2010	2011
Males	17	12	14	12	17
Females	20	22	6	24	16
Yearlings	3	1	0	0	4
Kids	15	9	4	7	9
Indeterminates	0	8	4	7	10
Total heads	55	52	28	50	56

Germanasca Valley								
	2004	2005	2006	2007	2008	2009	2010	2011
Males	48	61	71	78	86	86	88	111
Females	42	66	78	84	88	93	104	107
Yearlings	16	11	20	16	33	30	19	23
Kids	26	53	53	47	49	37	43	57
Indeterminates	14	12	1	8	5	4	8	6
Total heads	146	203	223	233	261	250	262	304

Pellice Valley					
	2004	2005	2006	2010	2011
Males	14	17	29	27	23
Females	13	19	20	14	24
Yearlings	2	2	6	7	5
Kids	7	10	8	8	11
Indeterminates	0	0	1	3	0
Total heads	36	48	64	59	63

Population structure						
	Pellice Valley	St.dev.	Germanasca Valley	St.dev.	Chisone Valley	St.dev.
Sex ratio (males/females)	1.25	0.39	0.96	0.09	1.06	0.75
Kids/total population	0.18	0.04	0.20	0.04	0.18	0.05
Kids/females	0.53	0.11	0.57	0.13	0.53	0.18
Density (heads/100 ha)	7.30	1.48	11.46	2.29	6.97	0.74

Population dynamics



Acknowledgements:

The authors are grateful to all participants in the field operations, particularly Mr Massimo Ferrier and Mr Giovanni Menusan of “Albergian” and “Valloncrò” Game Reserves.

Bibliografia:

- Giovo M. & Rosselli D., 2004. L'habitat stagionale dello Stambecco *capra ibex* in Val Chisone e in Val Germanasca (Alpi Cozie, Torino). Riv. Piem. St. Nat. 25: 347-369.
- Giovo M., Gaydou F., Giordano O., Bottini P., 2008. Risultati dei censimenti invernali dello stambecco in Val Pellice e Val Germanasca (TO, Italia). Atti del XXI incontro del gruppo stambecco Europa. Ceresole Reale 11-12 dicembre 2008.
- Maurino L., Alberti S., Boetto E., Fornero C., Peyrot V., Rosselli D., Usseglio B., 2008. Lo stambecco *Capra ibex* nel Parco Naturale Val Troncea: metodologie di conteggio e risultati. Atti del XXI incontro del gruppo stambecco Europa. Ceresole Reale 11-12 dicembre 2008.
- Maurino L., Mosso M., Dematteis A., Craveri P., Meneguz P. G., 2008. Modello di valutazione ambientale per lo stambecco *Capra ibex* per le Alpi Cozie torinesi. Atti del XXI incontro del gruppo stambecco Europa. Ceresole Reale 11-12 dicembre 2008.
- Maurino L., Alberti S., Boetto E., Fornero C., Peyrot V., Rosselli D., Usseglio B., 2012. Monitoraggio invernale dello stambecco nel Parco Naturale Val Troncea. Atti del VIII congresso italiano di teriologia. Piacenza 9-11 maggio 2012.
- Rosselli D. & Giovo M., 2004. Status of alpine ibex (*Capra ibex*) colony of Troncea and Germanasca Valley (Turin, Italy) In: Atti del 2nd International Conference on Alpine Ibex. Cogne 2-3 dicembre 2004: 40.