

Galliformi alpini: status dell'arte nelle Aree Protette delle Alpi Cozie



Luca Maurino

maurino@alpicozie.eu

Salbertrand, 24 marzo 2026



Ente di gestione delle aree protette
delle Alpi Cozie

Galliformi Parchi Alpi Cozie



	Cat. Popolaz italiana	Cat. globale
<i>Alectoris graeca</i>	VU	NT
<i>Lagopus muta</i>	VU	LC
<i>Tetrao tetrix</i>	LC	



Principali minacce

Degradazione dell'habitat

Cambiamenti climatici

Popolazioni poco numerose

Prelievo e bracconaggio

Predazione

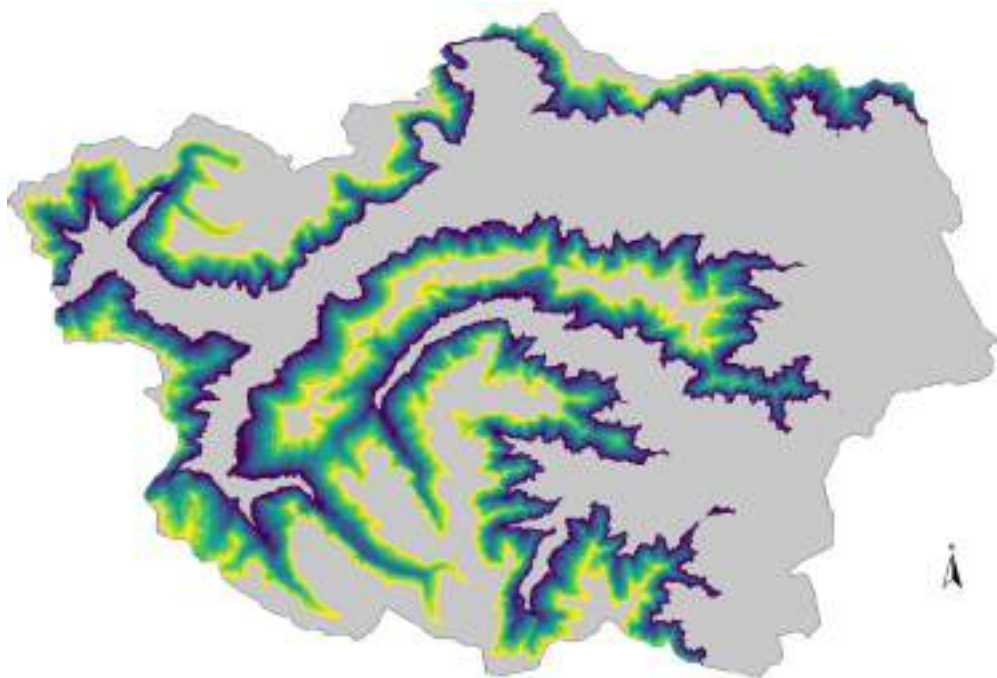
Collisioni su cavi

Disturbo

(Storch, 2007 IUCN)

Fagiano di monte: analisi fascia altimetrica di idoneità potenziale

Superficie totale area considerata, tutte le fasce altimetriche comprese	177235,77
% fasce altimetriche idonee sul totale	39,03



Analisi effettuate su DTM con passo equivalente a 50 m

Caategorie	Fasce altimetriche	Sup. (ha)	n. Celle 50 x 50 m	% di copertura
1	1600 - 1699	8675	3470022	12,54
2	1700 - 1799	8812	3525037	12,74
3	1800 - 1899	9028	3611264	13,05
4	1900 - 1999	9090	3636114	13,14
5	2000 - 2099	9042	3617029	13,07
6	2100 - 2199	8776	3510615	12,69
7	2200 - 2299	8259	3303536	11,94
8	2300 - 2399	7488	2995377	10,83
Totale		69170	27668994	100

Dinamiche paesaggistiche Pragelato ieri.....



Impatto invernale?



Impatto dei compressori sciistici?

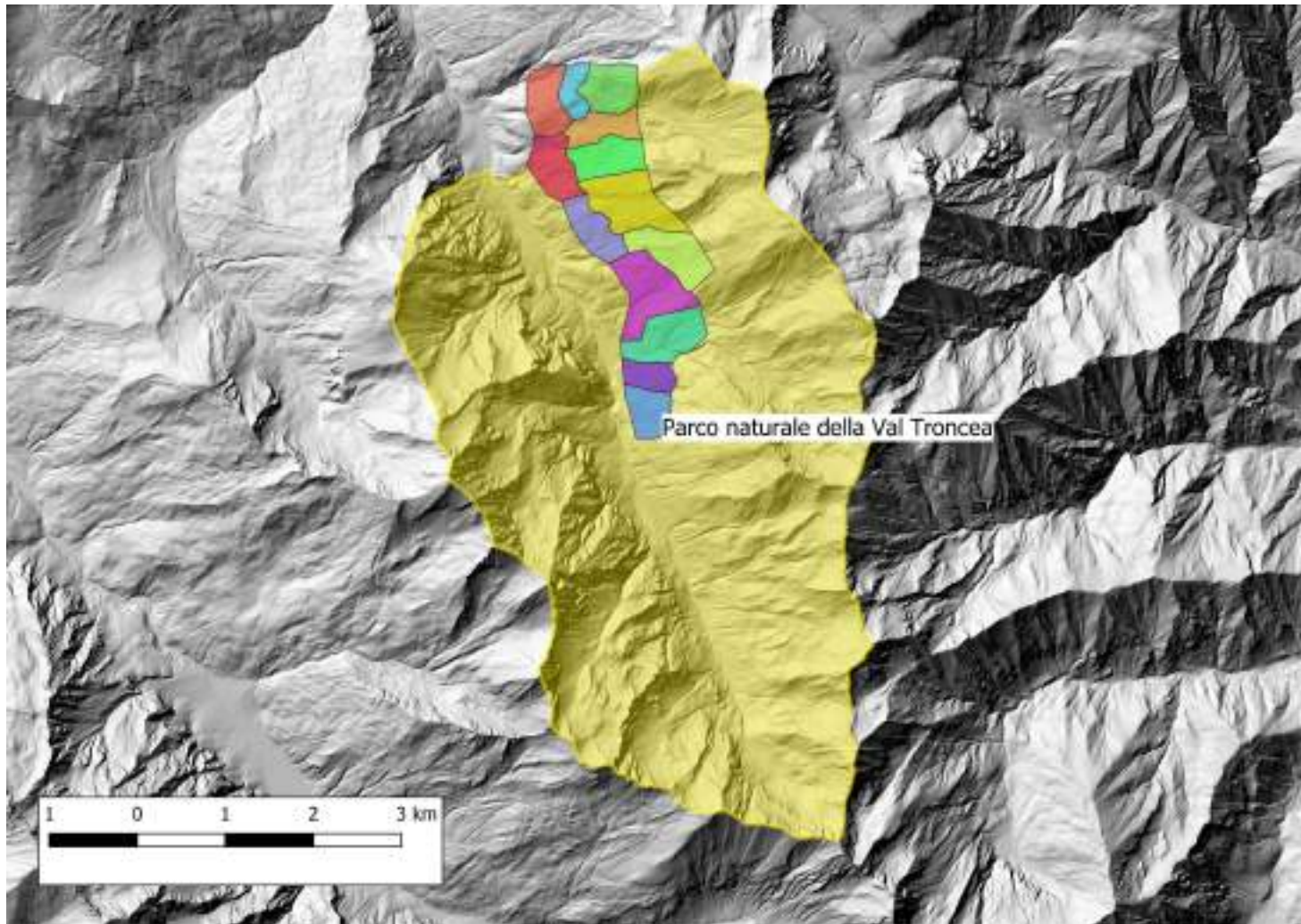
Freeride? Ma va....



Fagiano di monte

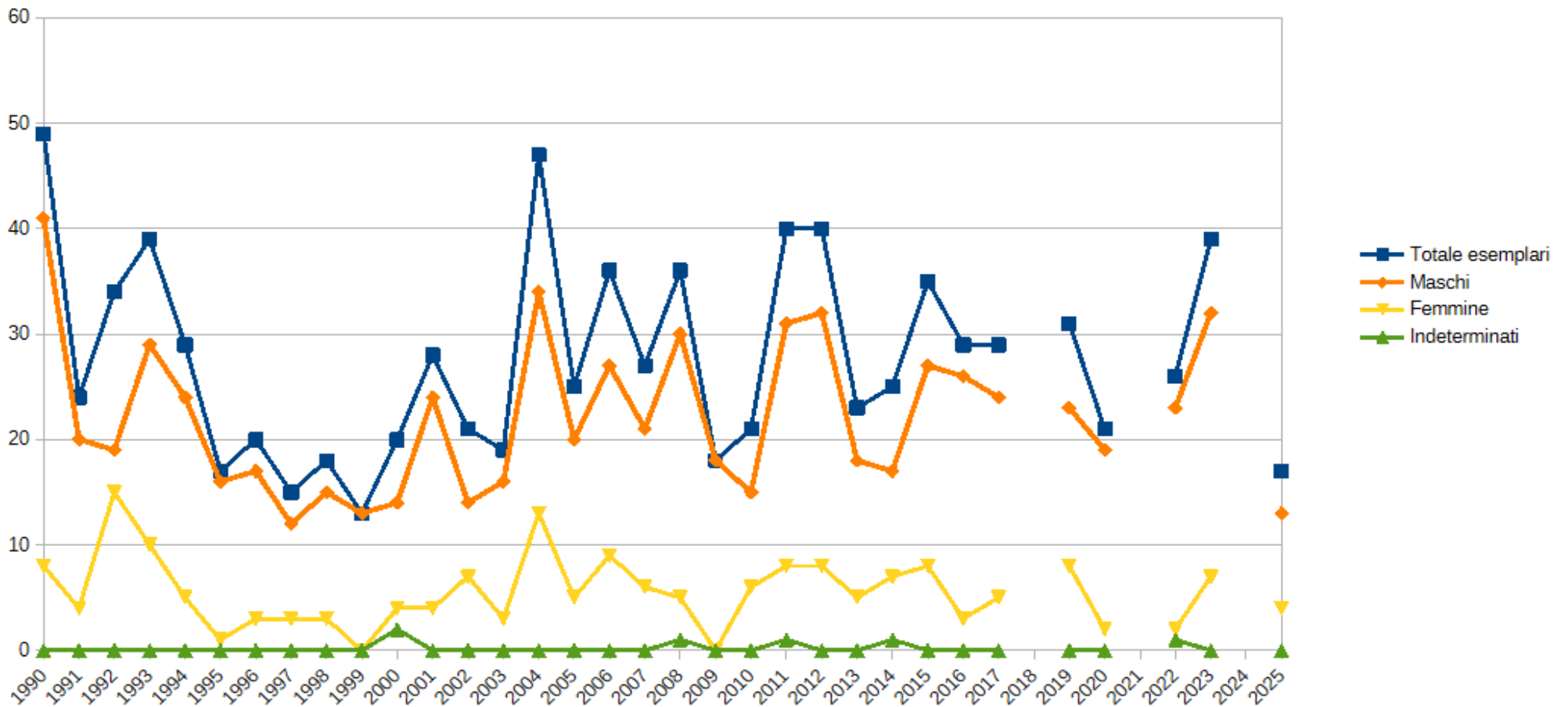


Fagianno di monte

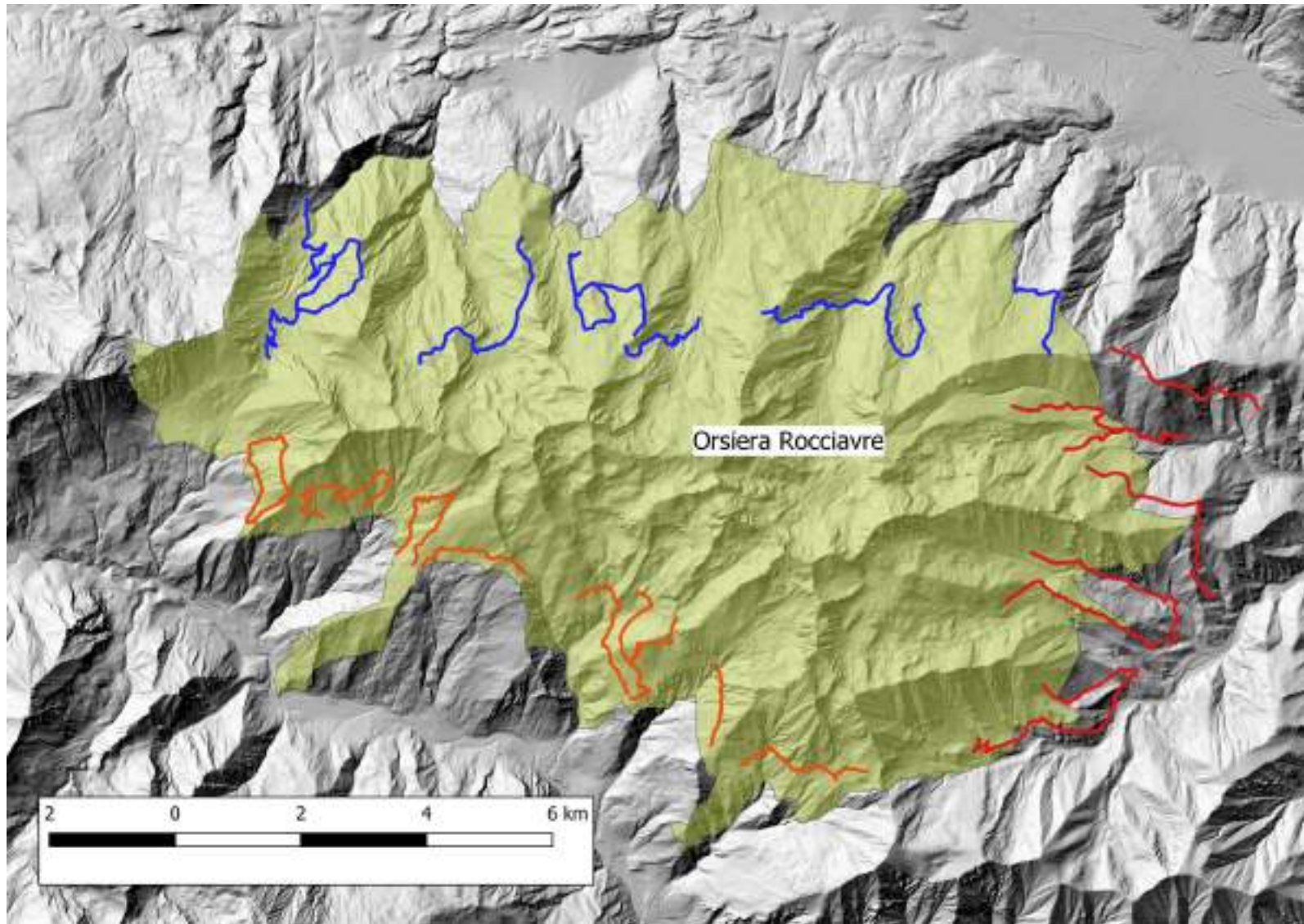


Fagiano di monte

Fagiano di monte Parco Val Tronca
dinamica di popolazione primaverile



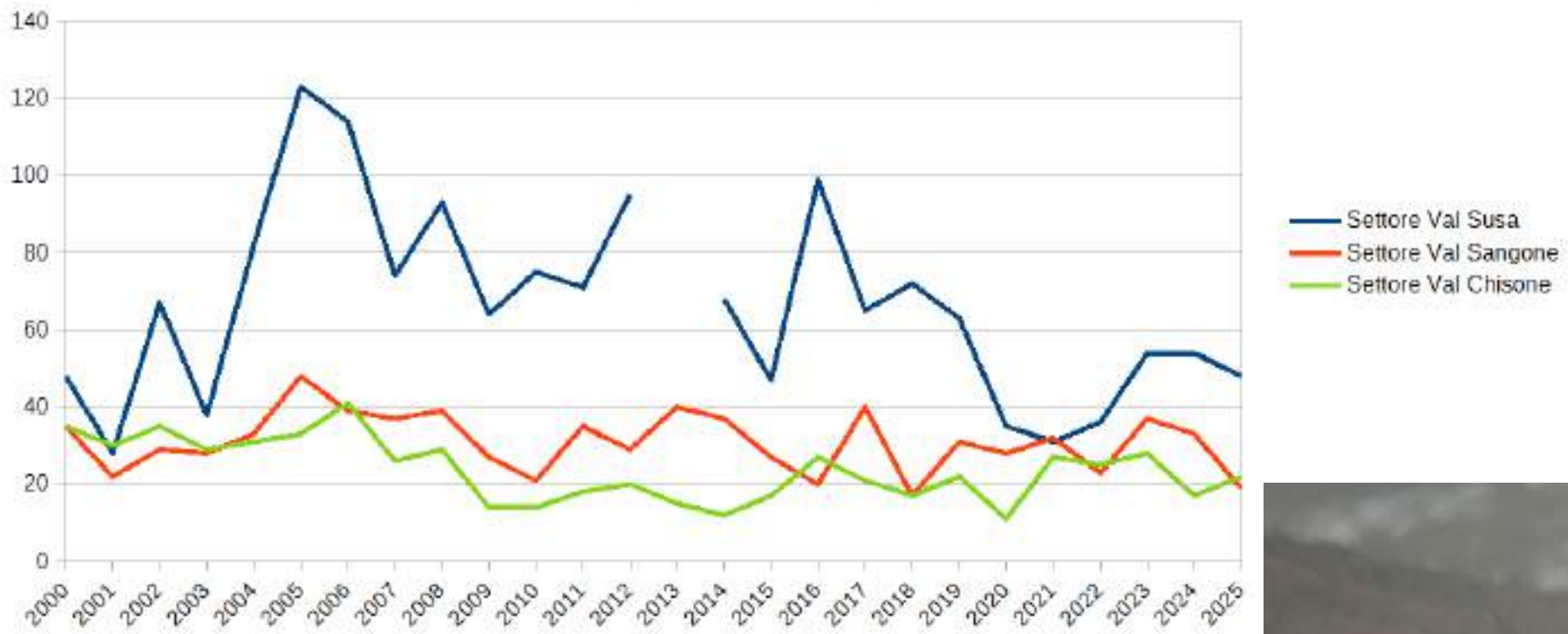
Fagiano di monte



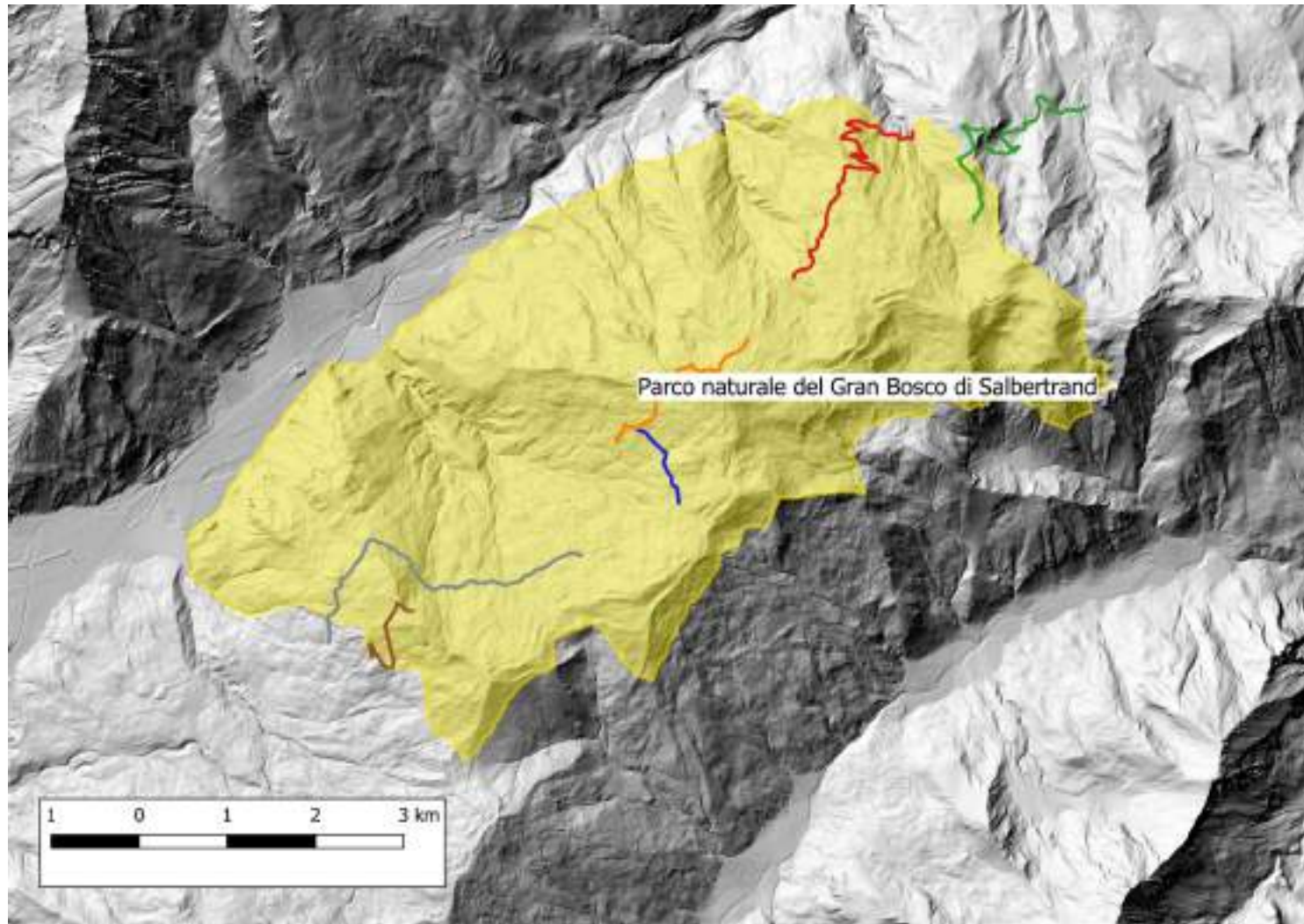
Fagiano di monte

Fagiano di monte Parco Orsiera Rocciavrè

dinamica popolazione primaverile



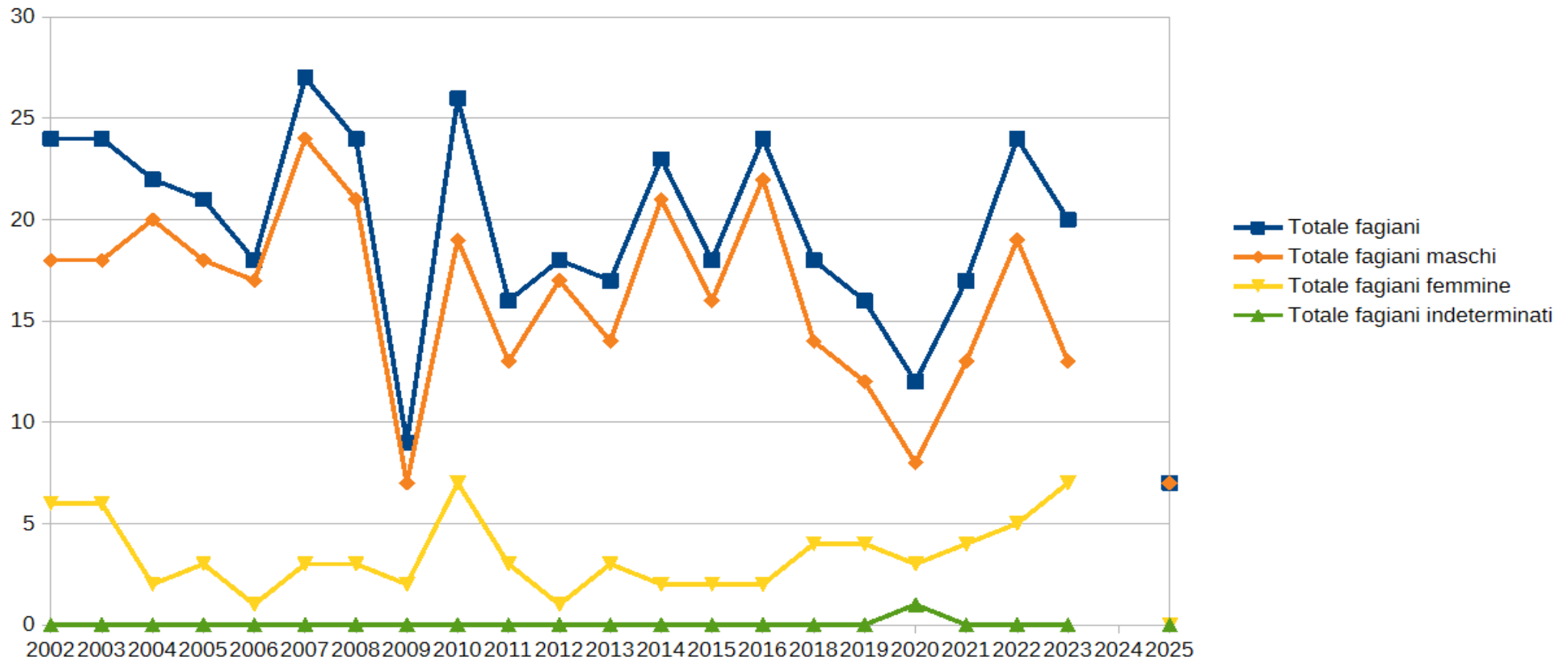
Fagianno di monte



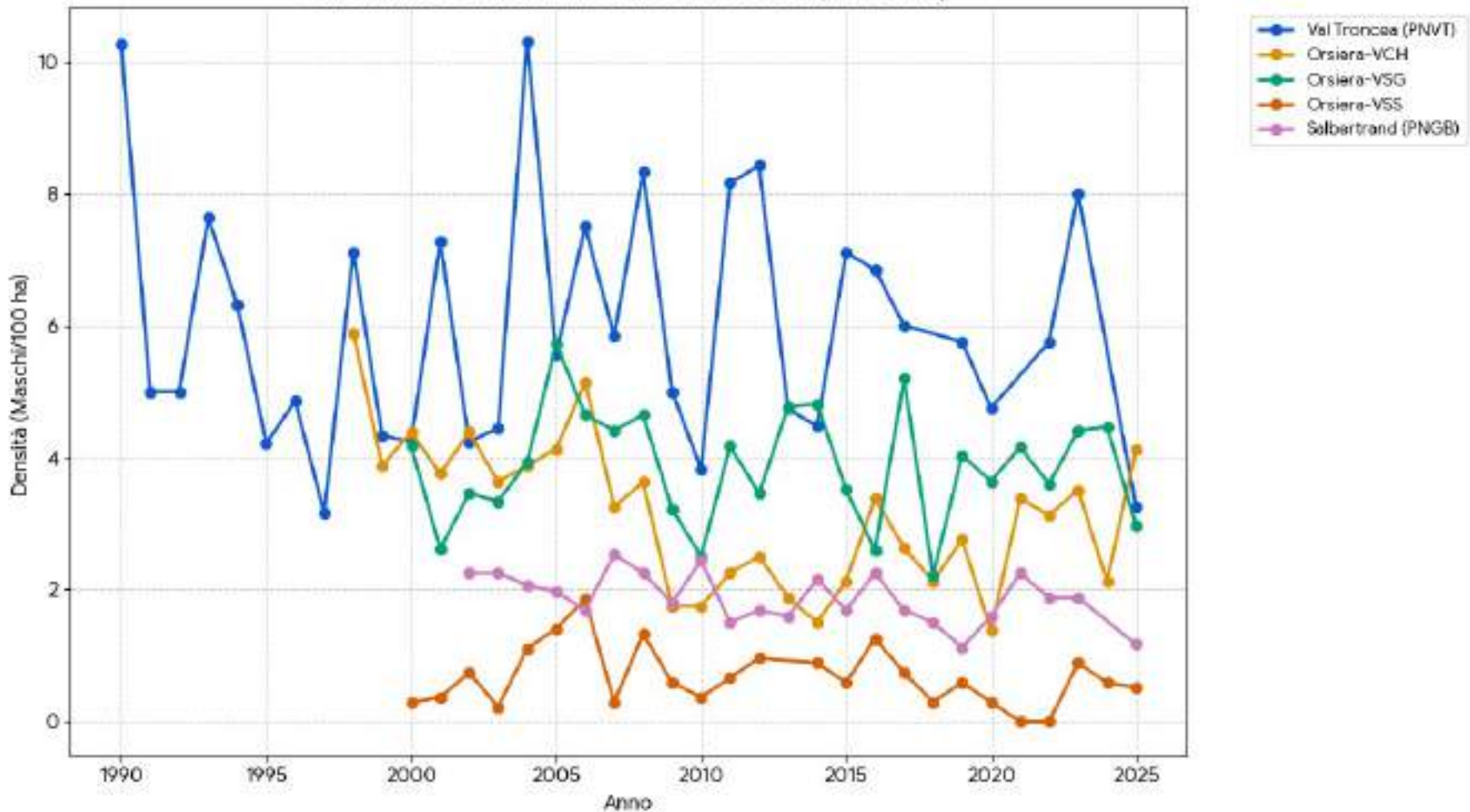
Fagiano di monte

Fagiano di monte Parco Gran Bosco di Salbertrand

dinamica di popolazione primaverile



Andamento Densità Primavera Gallo Forcello (Ind/100 ha)

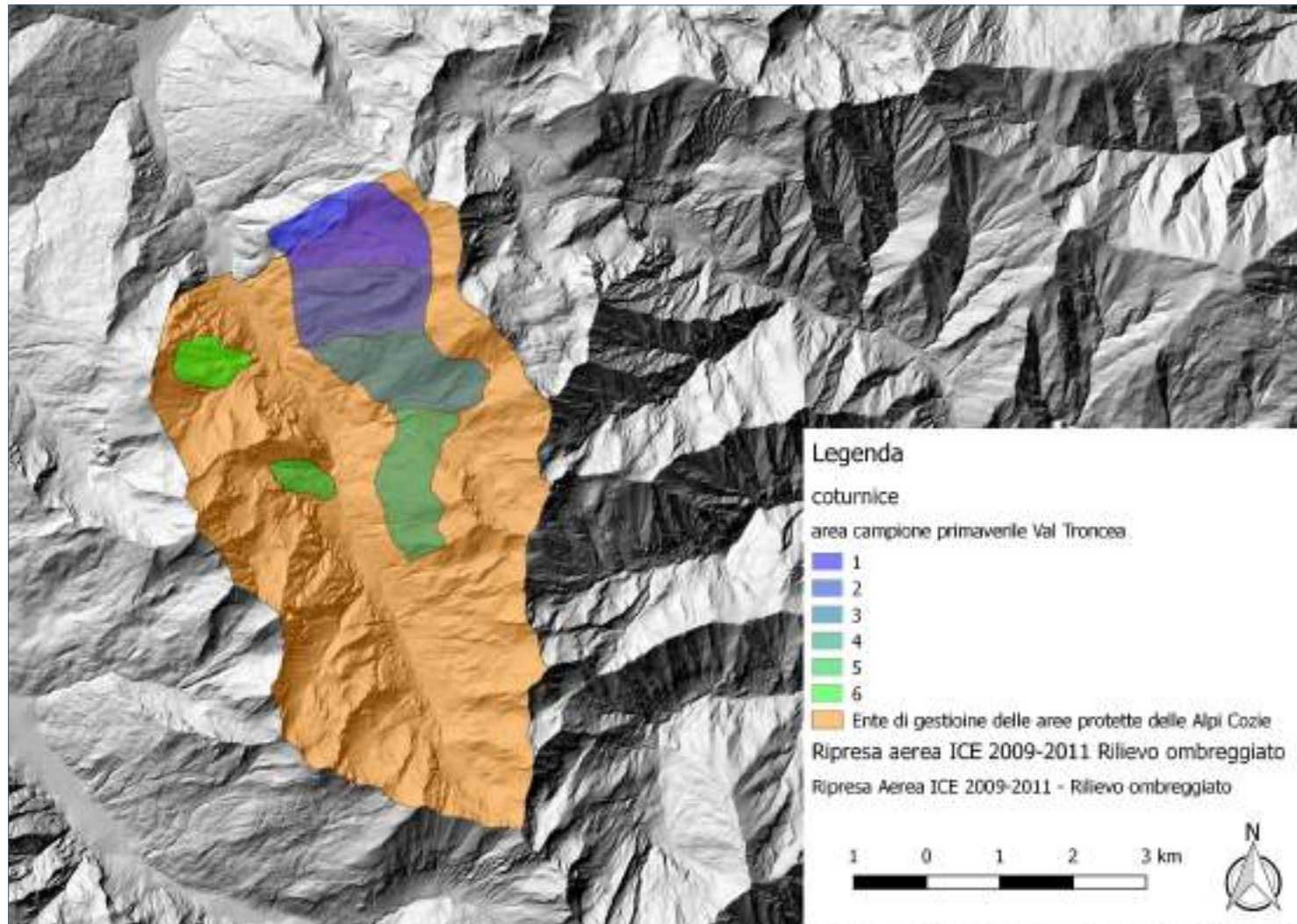


Settore 1	Settore 2	R (Pearson)	p-value	Significatività
Val Tronca (PNVT)	Orsiera-VSS	0.496	0.0188	Significativa
Orsiera-VSG	Orsiera-VSS	0.408	0.0432	Significativa
Orsiera-VCH	Orsiera-VSS	0.360	0.0772	Tendenza
Val Tronca (PNVT)	Salbertrand (PNGB)	0.008	0.9721	Assente

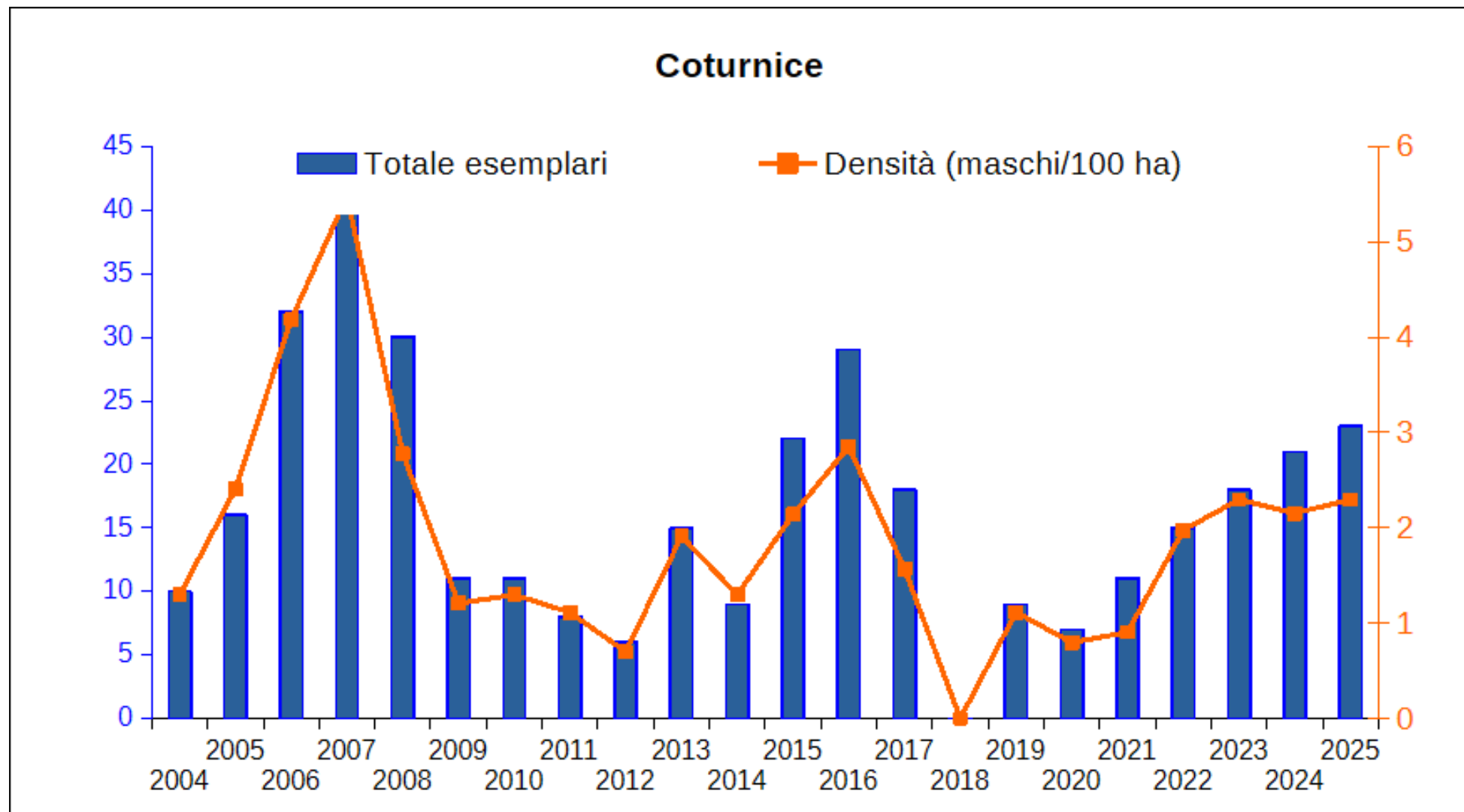
Coturnice



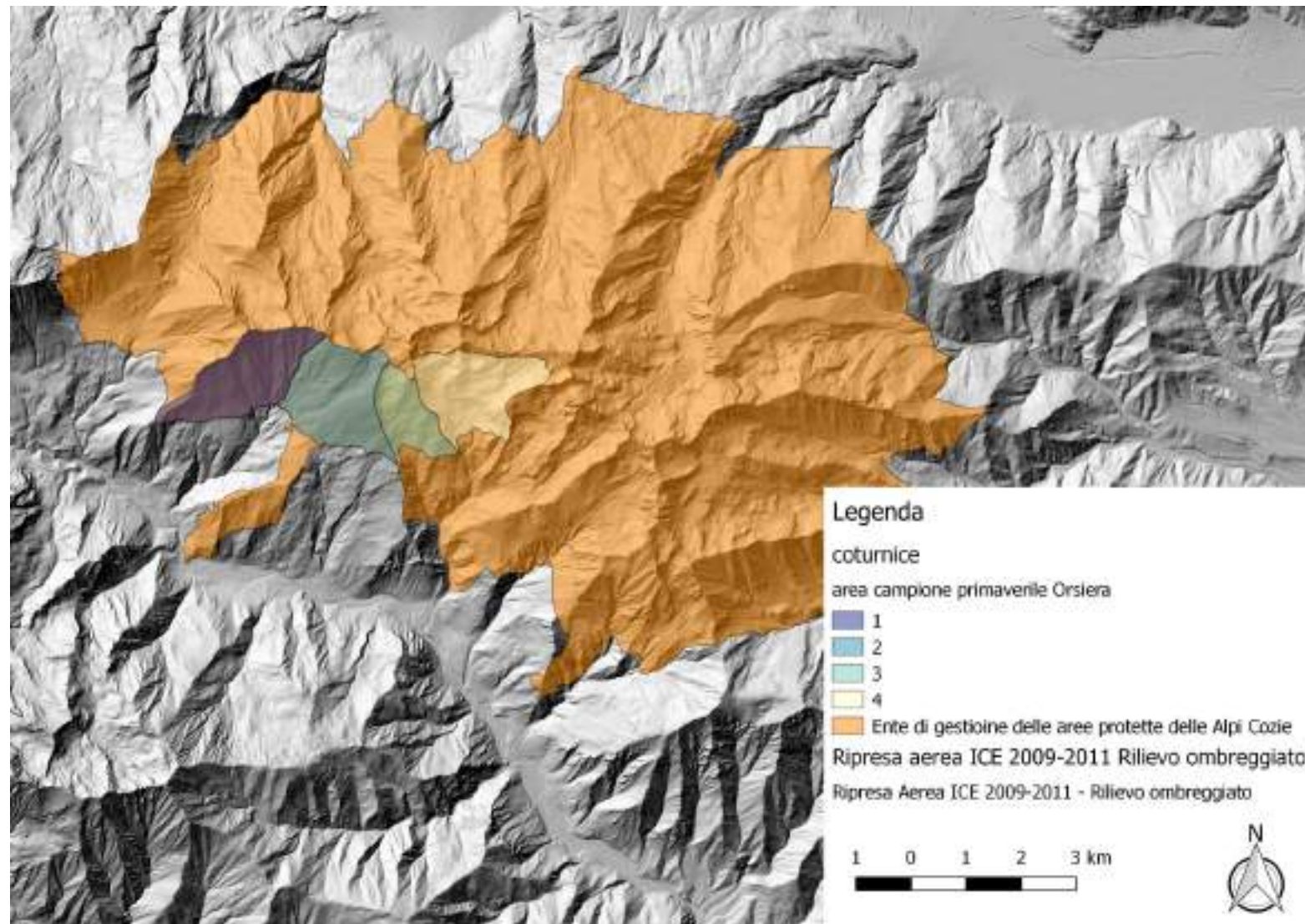
Coturnice



Coturnice



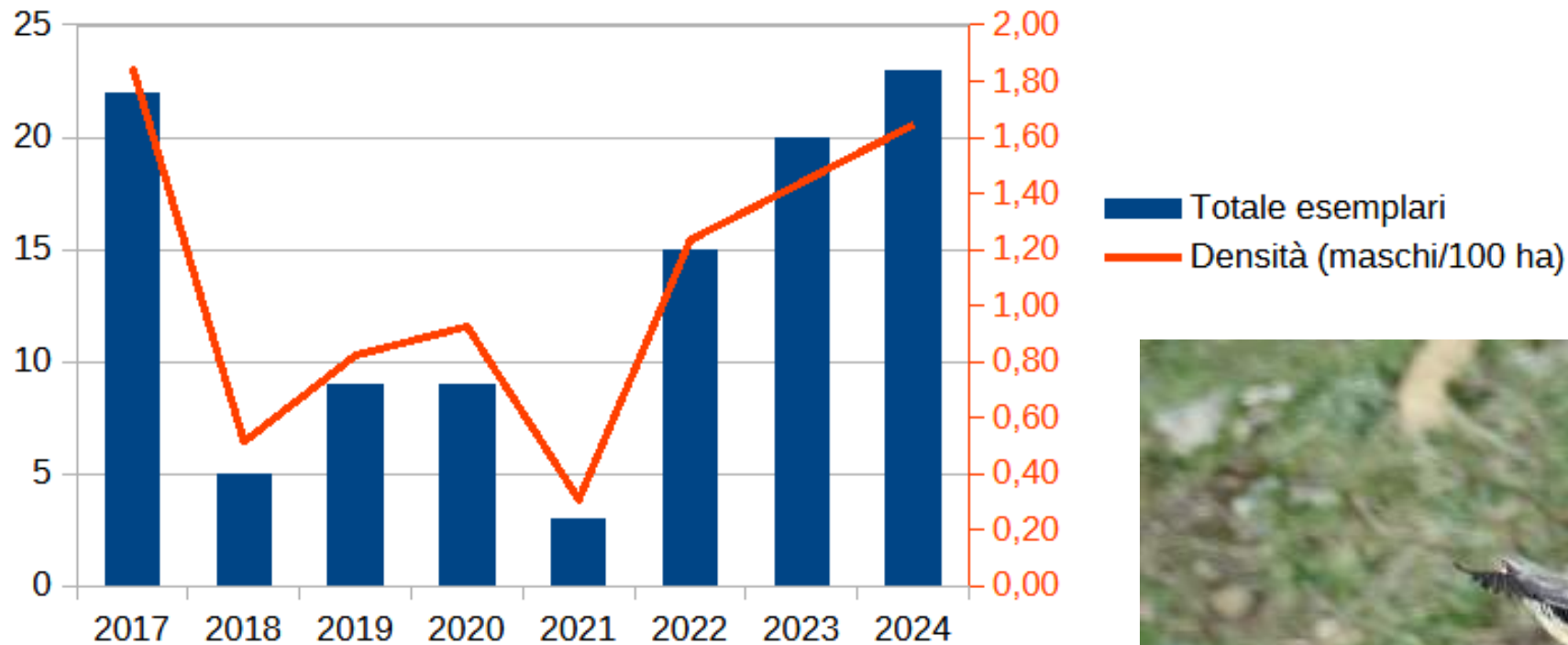
Coturnice



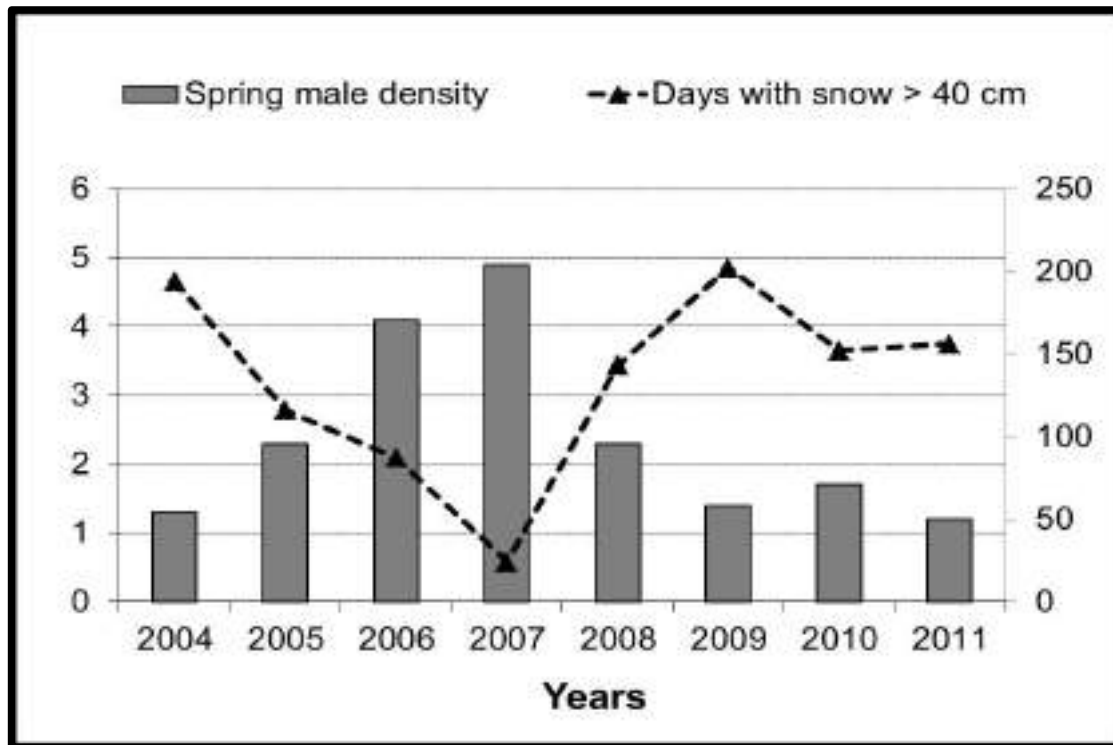
Coturnice

Coturnice censimento primaverile

Parco Orsiera Rocciavrè



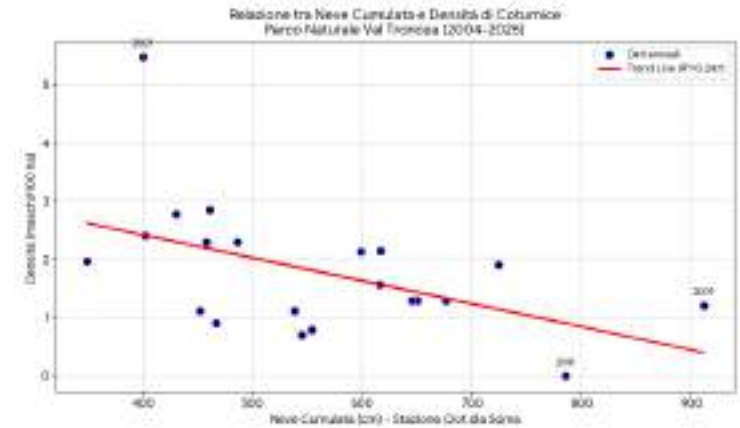
Come stanno le coturnici nel Parco?



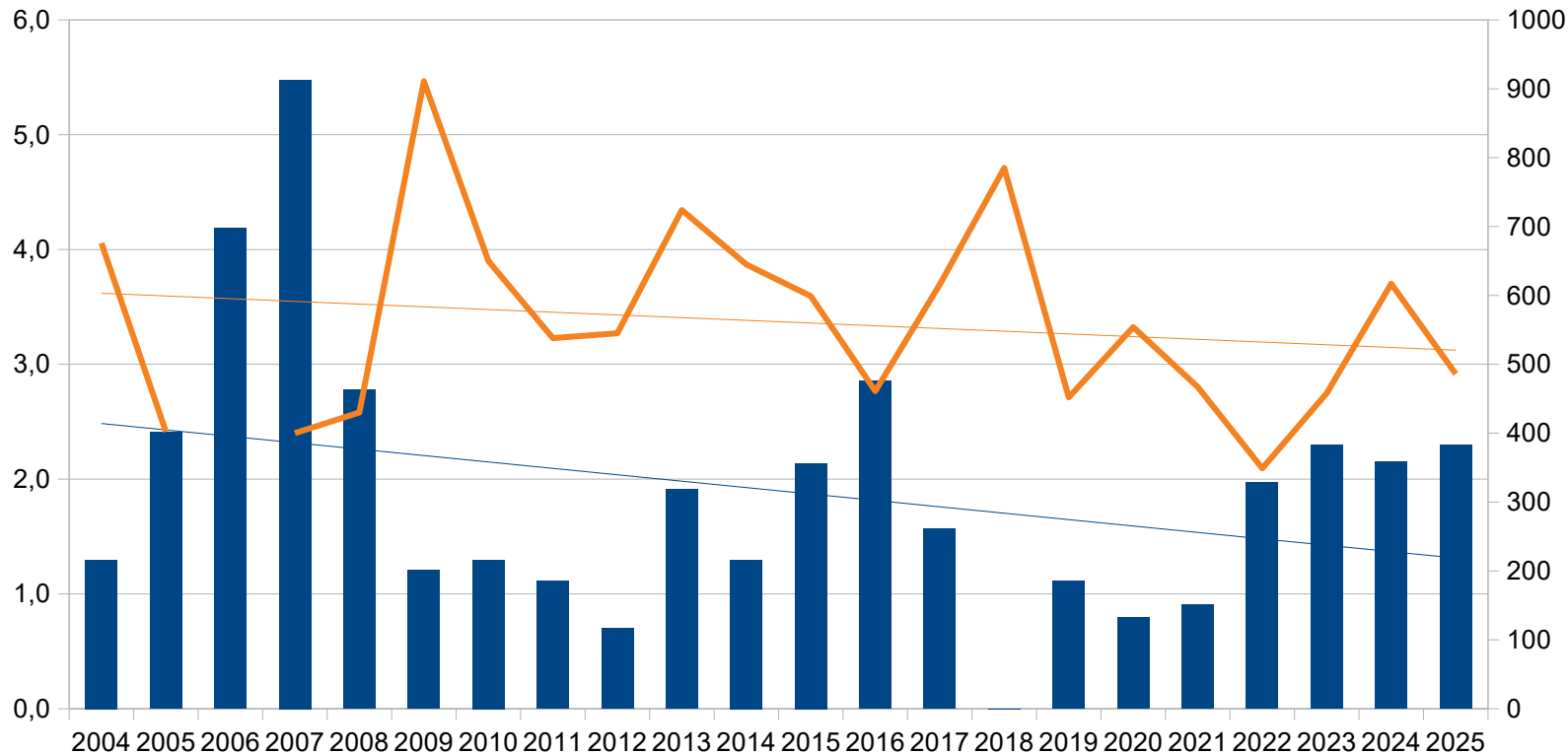
**Avocetta Italian Journal of Ornithology:
Status of rock partridge *Alectoris graeca saxatilis* in Val
Troncea Regional Park (Piedmont, north-west Italy)**

Luca Maurino^{1,2*}, Massimiliano Probo¹, Alessandra Gorlier¹, Michele Lonati¹

E poi?



■ Densità (maschi/100 ha) — Lineare (Densità (maschi/100 ha))
— neve cumulata — Lineare (neve cumulata)



Per ogni **100 cm** in più di neve cumulata, la densità di Coturnice diminuisce di circa **0,4 maschi/100 ha**.

Pernice bianca



Specie difficile da studiare..

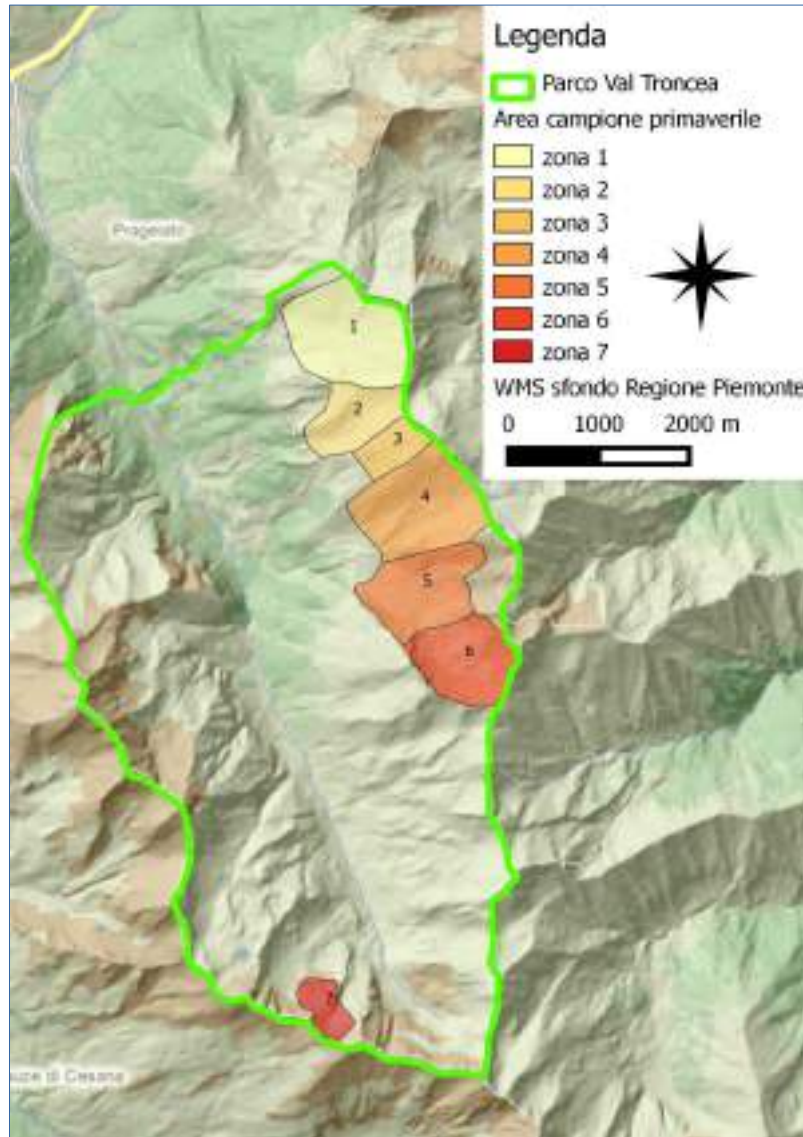








Pernice bianca



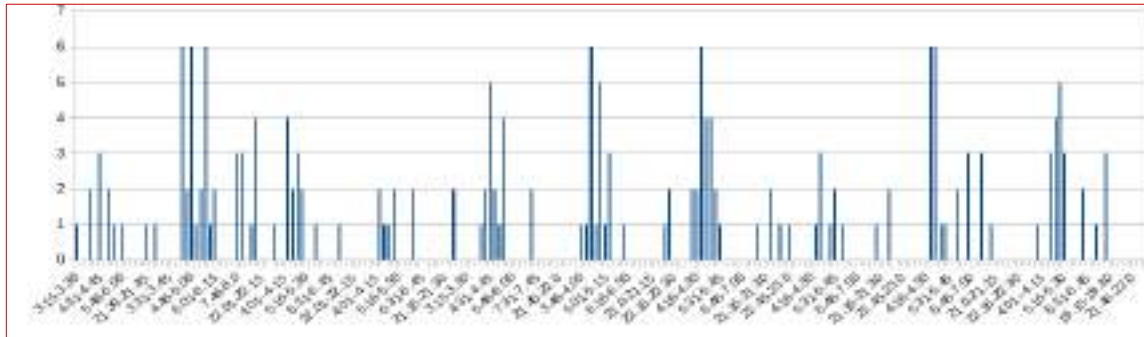
Hotel bellavista....



Tutti i comfort, ma camera condivisa...



Perché iniziare presto?



N = 170

Periodo 2005 – 2017

Fasce orarie di contatto	Animali cantanti per ora										Somma
	2005	2006	2008	2009	2010	2011	2012	2013	2016	2017	
3.15-3.30	1										1
3.31-3.45			1								1
3.46-4.00			0			1				1	2
4.01-4.15	2		0		1	1	2			0	6
4.16-4.30		6	4	2	2	6	2			0	22
4.31-4.45	3	2	2	1	5	1	6	1	6	3	30
4.46-5.00		6	3	1	2	5	4	3	6	4	34
5.01-5.15	2	1	2	2	1	1	4	0	1	5	19
5.16-5.30	1	2	0	0	4	3	2	1	1	3	17
5.31-5.45		6	0	0	0	0	1	2	0	0	9
5.46-6.00	1	1	1	0	0	0	0	0	0	0	3
6.01-6.15		2	0	2	0	1	0	1	2	0	8
6.16-6.30		0	0	0	0	0	0	0	0	2	2
6.31-6.45		0	0	0	0	0	0	0	3	0	3
6.46-7.00		0	0	0	2	0	0	0	0	0	2
7.15-8.0										1	1
7.31-7.45		0		0		0	0	0	0	0	0
7.46-8.0		3	1	0		0	0	0	3	3	10

Giornata tipo pernice bianca

- h. 16 partenza per postazioni in quota
- h. 19 arrivo e cena
- h. 20 montaggio tenda
- h. 21 vento gelido
- h. 4.00 sveglia e inizio conteggi

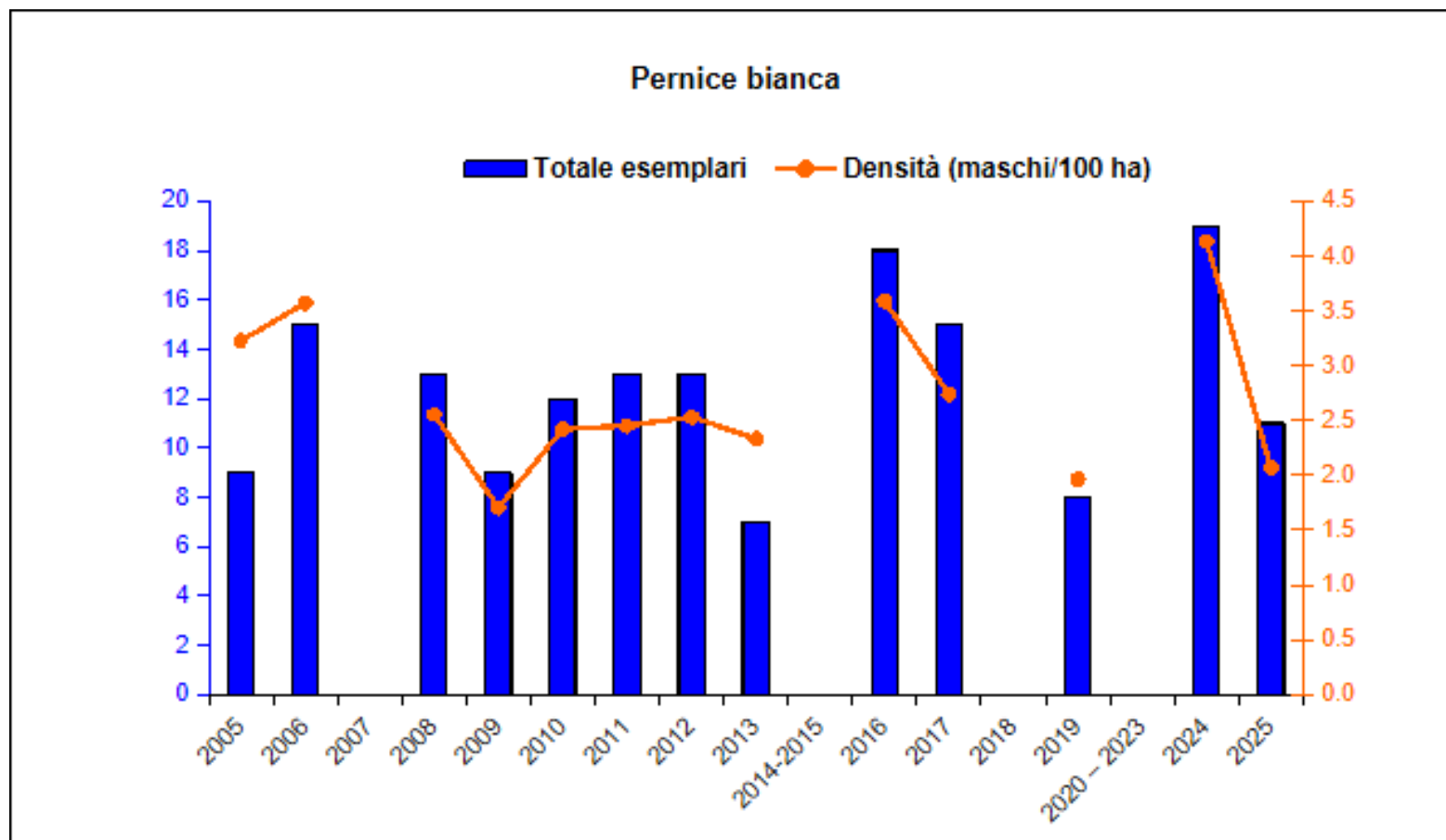


Giornata tipo pernice bianca

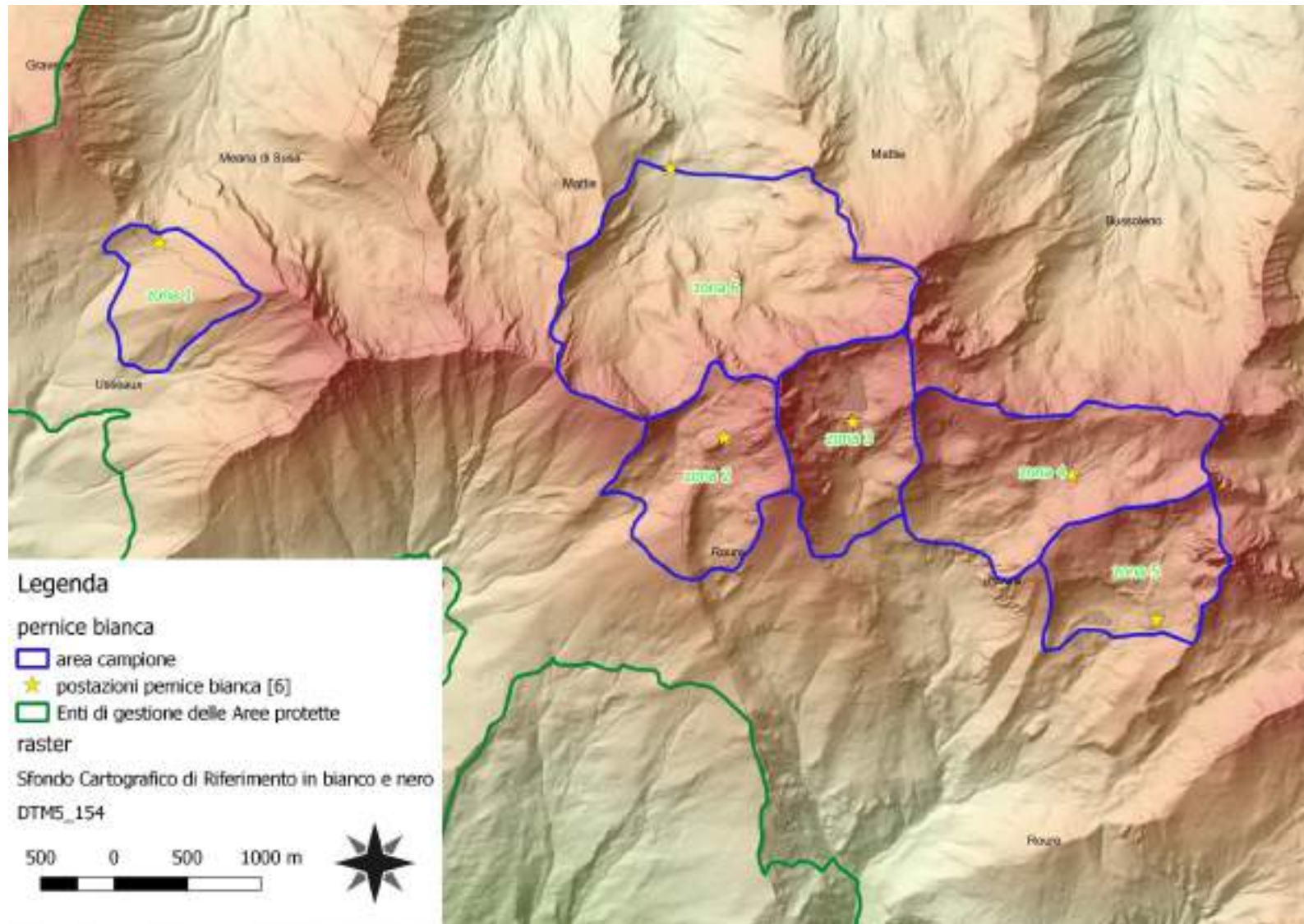


- h. 8.30 fine conteggi
- h. 10.30 arrivo auto
- h. 11.00 colazione calda al BAR
- h. 14 arrivo a casa
- h. 14, 01 pennica sul divano

Pernice bianca



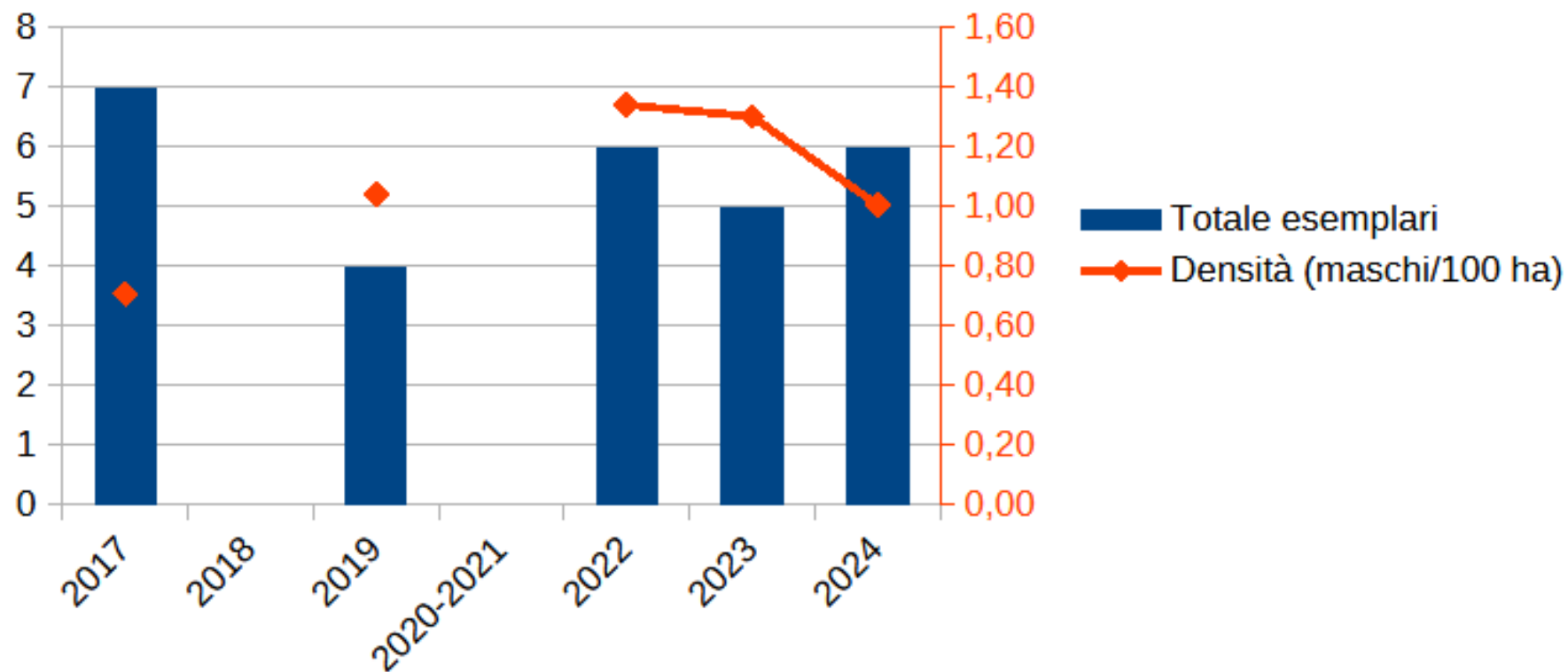
Pernice bianca



Pernice bianca

Censimento pernice bianca

Parco Orsiera Rocciavrè



Received: 22 June 2019 | Revised: 23 October 2019 | Accepted: 20 November 2019

DOI: 10.1111/geb.13049

RESEARCH PAPER

Global Ecology
& Biogeography

WILEY

WILEY

Local climate determines vulnerability to camouflage mismatch in snowshoe hares

Marketa Zimova¹  | Alexej P. K. Sirén^{2,3}  | Joshua J. Nowak¹  |
Alexander M. Bryan^{3,4}  | Jacob S. Ivan⁵  | Toni Lyn Morelli^{2,3}  |
Skyler L. Suhrer¹ | Jesse Whittington⁶  | L. Scott Mills^{1,7} 



Bersaglio facile....



Pernici bianche

Hotta et al. *BMC Ecol* (2019) 19:23
<https://doi.org/10.1186/s12898-019-0238-8>

BMC Ecology

RESEARCH ARTICLE


Open Access

Modeling future wildlife habitat suitability: serious climate change impacts on the potential distribution of the Rock Ptarmigan *Lagopus muta japonica* in Japan's northern Alps



Masanobu Hotta^{1*}, Ikutaro Tsuyama^{2*}, Katsuhiro Nakao³, Masaaki Ozeki¹, Motoki Higa⁴, Yuji Kominami³, Takashi Hamada¹, Tetsuya Matsui⁵, Masatsugu Yasuda⁶ and Nobuyuki Tanaka⁷



An aerial photograph of a snowy, mountainous landscape. The terrain is covered in snow, with various tracks and depressions visible. A prominent track leads from the bottom left towards the center. In the upper right, there is a distinct circular depression. The overall scene is bright and clear, suggesting a sunny day. A semi-transparent blue rectangular box is overlaid in the bottom right corner, containing white text.

Grazie per
l'attenzione e a tutti i
colleghi e i
collaboratori per il
lavoro svolto