

### SCI IT1110030 "Valle di Susa - Orrido di Chianocco e Foresto xerothermic oases"



### A "handmade" landscape... abandoned since 1960



### A tiny Mediterranean oasis...

altitude: 470-1630 m  
aspect: S-SW  
mean slope: 58%  
substrate: limestone  
rainfall: 800 mm y<sup>-1</sup>  
rainy days: 77/365  
water shortage: 9 months  
mean temperature: 11.3°C  
mean winter temp.: 3.6°C  
windy days: 325/365

**Flora**  
Piedmont:  
SCI IT1110030:

**n° species**  
3510  
~500 (14%)

### orchids



**dry grasslands**

**Stenomediterranean spp.**

### .....an extraordinary biodiversity...

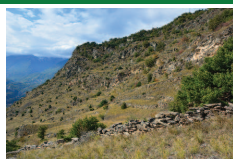
- ✓ habitat 6210\* Seminalural dry grasslands and shrubland *facies* on calcareous substrates (*Festuco-Brometalia*)  
\*important orchid sites
- ✓ habitat 6240\* Sub-Pannonic steppic grasslands
- ✓ 23 species of orchids
- ✓ Steno- and Eurimediterranean species and endemisms

### .... threatened by:

- ✓ absence of agricultural activities & livestock farming
- ✓ shrub encroachment (e.g. *Prunus spinosa*)
- ✓ afforestation (e.g. *Quercus pubescens*)
- ✓ wild fires
- ✓ land use changes

## OBJECTIVES

Establishing a long-term conservative management in areas where there is little productive interest but high natural value



- ✓ implement a grassland management on 80 ha of public land based on sheep grazing
- ✓ restore shrub and tree-encroached grasslands by mechanical clearing and cutting
- ✓ involve local authorities and stakeholders in managing high value areas
- ✓ increase the awareness on the use of natural resources by promoting educational activities

## ACTIONS

### Preparatory actions

- A1. Conservation status assessment for the 6210\* habitat
- A2. Analysis of past to present management
- A3. Guide-lines for the habitat conservation and restoration
- A4. Technical actions for the habitat conservation and restoration
- A5. Establishment of a monitoring network for the habitat

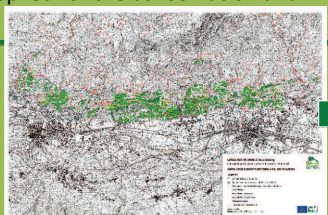


- ✓ **grassland management guide-lines** focused on the entire SCI and other Natura 2000 areas
- ✓ **grassland management plan** with concrete actions to be applied for the conservation and restoration of 80 ha of grasslands

- ✓ **261 vegetation surveys** (network of 189 permanent transects to be repeated every year)
- ✓ **352 ha** (30% of SCI surface) **covered by two priority habitats 6210\* (53%) and 6240\* (47%)**
- ✓ **40 species rare, protected, or included in Red Lists**
- ✓ **70% of grasslands encroached by shrubs or trees**
- ✓ **360 ha** (30% of SCI) **covered by terraces and cultivated in the past centuries**
- ✓ **only 37 ha** (3% of SCI) **cultivated at present!**

### Concrete conservation actions

- C1. Restoration of parts of the habitat
- C2. Arrangement of grazing equipment for conservative management
- C3. Buying of domestic animals for the conservative management
- C4. Restoration of the access to grazed areas
- C5. Application of grazing management guide-lines



- ✓ **mechanical clearing and cutting on 20 ha** of grasslands encroached by shrubs and trees
- ✓ **restoration of trails** to assure access to grazing areas



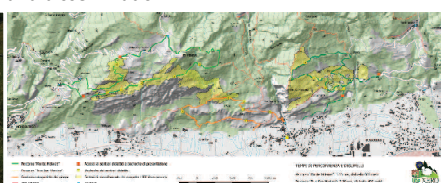
- ✓ **permanent let-down fences** (wildlife friendly), **underground water pipes**, and **waterers** arranged on the grazing area

- ✓ **"service flock" of 150 sheep** bought by the coordinating beneficiary
- ✓ **grazing implemented on 80 ha of public lands + 20 ha of private lands** granted by owners (thanks to dissemination actions!)



### Public awareness and dissemination actions

- E1. Notice boards and information panels
- E2. Conferences and seminars
- E3. Publication of the project
- E4. Website of the project
- E5. Activities of public awareness and dissemination



### Monitoring of the impact of the project

- D1. Monitoring of action effects on the vegetation
- D2. Monitoring of action effects on orchids and Stenomediterranean rare species
- D3. Monitoring of action effects on socio-economic aspects and ecosystem services

- ✓ **2 educational trails** on xerothermic grasslands designed and arranged
- ✓ **meetings, workshop, conferences, and educational activities**